

Technology World Company

For Electro Mechanical Contracting & Trading



شركة عالم التكنولوجيا

للمقاولات الكهربائية والميكانيكية المحدودة

## Business Profile

Technology World Construction  
Company

Erbil, Ain Kawa

[info@tworld.cc](mailto:info@tworld.cc) , [sjabar@tworld.cc](mailto:sjabar@tworld.cc)

+964 (0) 770 3993 247, +964 (0) 750 7409 450



# VISION

To become the leader in engineering and construction whilst also setting a benchmark for safety performance and cost effective quality workmanship.



# CONTENTS

Vision .....	2
Integrated engineering solutions .....	2
General managements message .....	3
SAFETY .....	4
Planning and Scheduling .....	5
Labour Hiring .....	6
High Accuracy Job Implementing .....	7
Operation .....	8
Engineering Team .....	9
IC Major Projects.....	10
IC Major Projects.....	11
IC Major Projects.....	12
IC Major Projects.....	13
IC Major Projects.....	14
IC Major Projects.....	15

## TW CONSTRUCTION AND VISION

To become the leader in engineering , Procurement and construction EPC , whilst also setting the benchmark for safety performance and cost effective quality workmanship.

## INTEGRATED ENGINEERING SOLUTION

TW is specified Company for EPC and Consulting service on oil and power field These include Company Management system Like Company policy, HSE, organization, Responsibilities, Engineering Management, Quality Management, Procurement, logistic , Construction Management.....etc



One of our key points of differentiation is our ability to deliver engineering solutions whose elements have been integrated across different areas of technical expertise within IC.

In addition to our credentials for engineering excellence, IC's clients benefit from our outstanding performance in safety, quality and the environment, complemented by a highly stable industrial relations record.



# IC CONSTRUCTION



## GENERAL MANAGEMENT MESSAGE

ITW is Company for EPC dealing With specific discipline as show Below.

Piping, pipeline, tanks farm, static And rotating equipments (vessel, Exchanger, pumps, compressor, Turbine), field Engineering for Construction work, QA/QC as per Quality management system (include organization chart, site Quality plan, responsibilities..etc), Pre-commissioning work for piping , rotating equipment, prepared Test pack for piping as per project Procedure, handover dossier for Work done and preservation

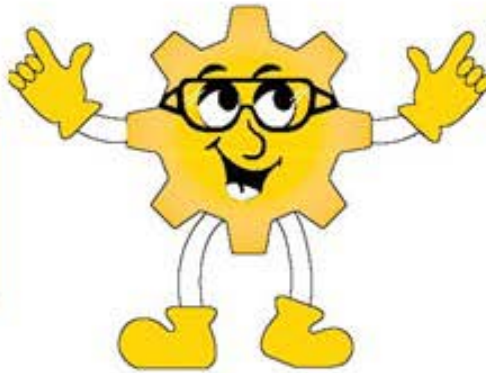
A key initiative within TW was the commencement of a comprehensive training program developed by DuPont Safety Resources. This has proved to be one of the Iraqi's leading programs of its type. It was launched within IC as "SafetyMates", communicating the principle that everyone is responsible for safety. The starting point of SafetyMates is training senior managers in the structure of safety management so that this can be passed on to supervisors

and the rest of the workforce Our management team and supervisors have extensive practical experience and expertise in all forms of materials-handling and process equipment, while site teams are backed by workshop capabilities . TW's regional presence in locations such as Baghdad, Erbil(Kurdistan) and Basra as it allows us to offer customers continuity in the project and maintenance teams working on their sites. These regional satellite branches are supported by our Head Office based in Kurdistan, Erbil.





Engineering Safety is  
Engineering Safely  
for ZERO Injuries



Do it Before Every Job

# COMMITMENT

## SAFETY

TW for EPC shares IC's award winning safety philosophy, which can be interfaced with our client's own safety policies and procedures. IC's management is accountable for providing the safety process, practices, structure, equipment, supervision and training, so that employees and sub-contractors are free from the risk of workplace injury or illness.

ITW's Safety Mates "looking after each other" program utilises the DuPont safety management philosophy throughout all levels of the company. Our managers and supervisors conduct Unsafe Acts Prevention (UAP) safety observations and all employees conduct Stop & Think risk assessments before commencing any job.

TW places a strong emphasis on the provision of a safe working environment, by utilizing effective risk management processes including site and project hazard to develop and maintain safe work practices. We ensure the

standards are continually upheld by conducting pre-start meetings at the commencement of each shift, together with weekly Tool Box meetings.

These are then entered into our Safe database to produce our safety results and discussed at the weekly Tool Box sessions and regular safety meetings.

Our Safe system also allows our management team to analyse leading and lagging key performance indicators to ensure we continue to modify and improve our work behavior and performance in the workplace. TW considers achieving the highest standards of Occupational Safety and Health (OSH)

performance as key organizational objective. Improvement in safety procedures is ongoing, as we are continually auditing our sites and completing on-site work observations of our peers' work practices.

We recognize the benefits of effective OSH management, both in human and economic terms. The essence of IC's attitude to safety is summarized in our Safety Policy.

Our safety system complies with the Europe Standard for Safety and is a continuing process to develop outcomes that can be measured and communicated effectively to all stakeholders.

We consider current legislative OSH requirements to be the minimum acceptable performance standards and strive to exceed them





# PLANNING & SCHEDULAIING

## Planning & Scheduling

TW for EPC believes Planning and Scheduling is absolutely critical for achieving a successful outcome on any project. Project plans are developed for use by both the Client, Project Manager and the Project Management Team.

Planning requirements for complex projects can be very diverse, encompassing any of the following disciplines

Maintenance planning and Scheduling Capital justification Budgeting Choice of compute maintenance systems Shut-down project management Condition monitoring Predictive maintenance Strategies Breakdown analysis and reliability engineering Spare parts inventory management

Replacement strategies Risk Management Safety practices Environmental compliance and many more.

As such we possess licenses for a range of scheduling software such as Primavera P3, Primavera V5, Suretrak 3.1 and Microsoft Project 2003; and the capability

to effectively use these scheduling tools. These packages are selected to suit the clients request or the complexity of the project to develop a project schedule.

Careful consideration is given to develop the project Work Breakdown Structure and to

detail the activities sufficiently to a manageable and measurable level.

This enables us to include major contract milestones and deliverables, to allocate resources for meeting the desired level of control and monitoring.

TW has also developed unique systems, which enables integration of the schedule with our site completion. This provides an accurate controlling mechanism to monitor actual costs, earned progress versus budget and baseline schedule





# LABOUR HIRE



## LABOUR HIRE

TW for EPC offers clients the security and convenience of supervised specialist labour hire teams and site maintenance contracts on a 24 hour, 7 day per week basis.

We have a database of many experienced personnel that has allowed us to take on construction contracts and Site rehabilitations and maintenance of projects requiring up to 5,000 man-hours a week.

Our varied and multi-skilled workforce maximizes resource effectiveness in all types of work. A strong emphasis on clear workforce communication ensures that client reporting is accurate, while our commitment to meeting best practice standards ensures we do what is required to get it right the first time.

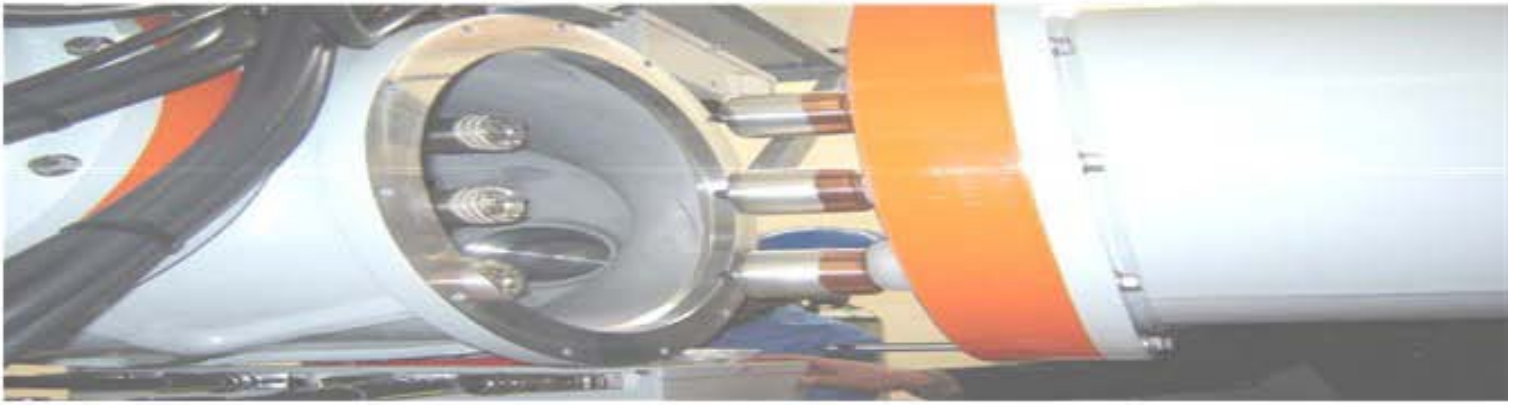
Commitment: On-Time and On-Budget

TW for EPC specializes in the timely and cost effective hire of labour from all trades and, where applicable, semi-qualified personnel screened from our own database.

We have achieved an excellent performance record in planned maintenance and the overhaul of both fixed plant and mobile equipment.

TW's facilities on construction provide both the administrative and technical backup needed to meet our own exacting time and budget forecasts.





## HIGH ACCURACY JOB IMPLEMENTING

We have equipped our satellite workshops, vehicles and mobile field workshops with the tools and equipment enabling us to assemble quickly.

Preproject shut-downs are a critical activity for most companies; IC specializes in the refurbishment and alignment of major plant and equipment.

We have personnel who are specialists in the alignment of rotational equipment and understand the requirements for maximum service life with minimal wear.

For shut down maintenance, we pride ourselves on the prompt delivery of quality personnel. testing compliance.





# OPERATIONS

All EPC activities are supported by technical services including planning and scheduling, civil and electrical subcontracting, reliability engineering, failure analysis and predictive maintenance.

TW Construction and Rehabilitation also provides specialist supervised labour services, with a database of Many experienced personnel, allowing the company to undertake single source construction and maintenance and operation contracts requiring 5,000 to 10,000 man-hours per week.

The varied and multi-skilled workforce maximizes resource effectiveness in all types of activities, as well as lowering project recruitment costs.

Confirmation of all Qualifications, Certificates and tickets are also carried out. IC is able to tailor the screening process for specific client needs.

We pride ourselves on our

safety record and each of our workshops is audited throughout the year by year for safety compliance and conformity. in Port Hedland.

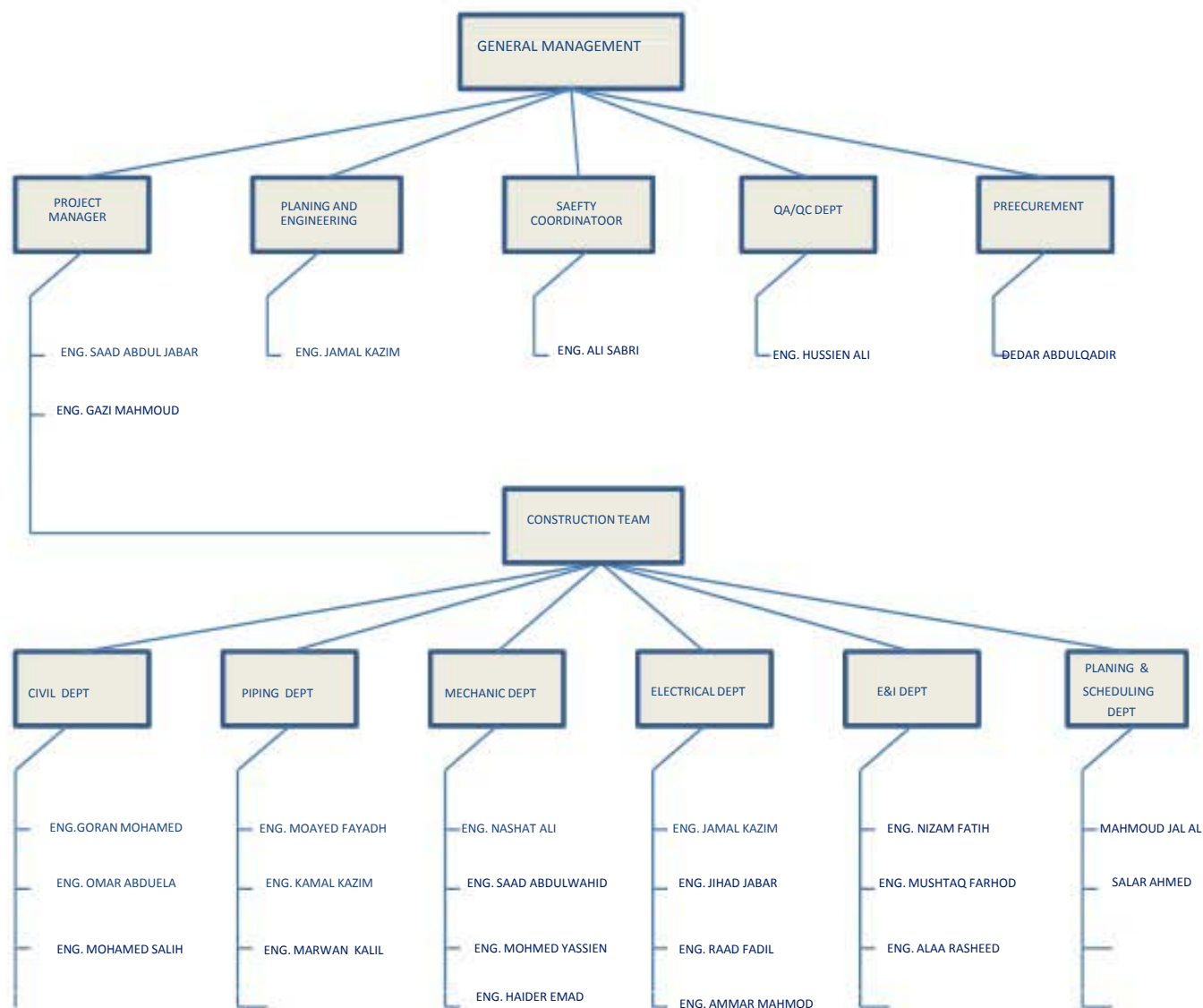
With ongoing commitment we shall have all our satellite





To become the leader in engineering and construction whilst also setting a benchmark for safety performance and cost effective quality workmanship..

# IC Construction



# MAJOR PROJECTS



Alignment for different type  
,Model and size of Rotating  
Equipments



Construction of 500MVA Erbil  
Gas Power Station



Construction of 16X25MVA  
South of Baghdad Gas Power  
Station

# MAJOR PROJECTS



Construction of 2X25MVA  
Gas Power Stations for Al-  
Muthana Cement Factory



Construction of Fuel  
Storage Tanks



Construction of Al  
Washahsh 132KV GIS  
Substation



# MAJOR PROJECTS



Construction of Al Musaib  
Power Station



Construction of Fire  
Fighting system in Al Haritha  
Power Station



Construction of 33/11 KV  
Substation in Baghdad and  
Diala

# MAJOR PROJECTS



Painting Inspection  
Instrument Tools Used  
For Inspection Painting And  
Coating Activities On Piping  
And Structure Work



Magnetic Test Tools  
And Spray Sets For  
Inspection Defects On  
Piping And Structure Work



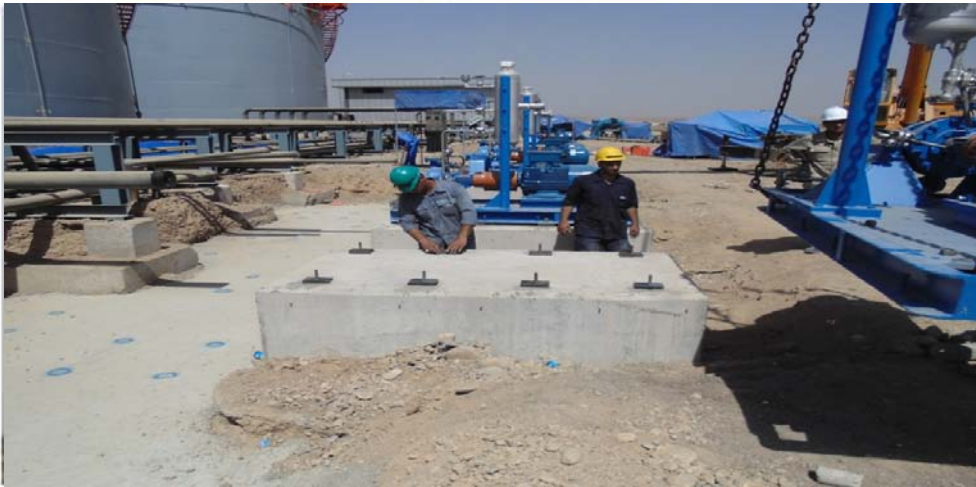
Sandblast Equipments  
With Protection Safety  
Mask For Sandblast  
Activities



# MAJOR PROJECTS



Pump Alignment By Using  
Laser Method



Pumps Installation  
Preparation



Pump Installation  
Completion



# MAJOR PROJECTS



Post Weld Heat Treatment Equipments For Piping And Fitting During Construction



Post Weld Heat Treatment Equipments For Piping And Fitting During Construction



Post Weld Heat Treatment Equipments For Piping And Fitting During Construction